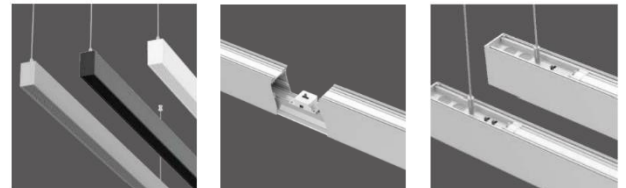


## LL-04 INDIRECT & DIRECT LED LINEAR SERIES



### SPECIFICATIONS

CCT	2200k-6500k
BEAM ANGLE	12°/24°/36°/50°
SDCM	SDCM≥5
COLOR RENDERING INDEX	RA≥90
WATTAGE	14.4W
INPUT VOLTAGE	DC24V
LUMENS	VARIES
DIMMING OPTION	TRIAC/0-10V/DALI
DIMMING RANGE	N/A
LIFE SPAN	50000H
LIGHT SOURCE TYPE	LED (2835)
NUMBER OF LIGHT SOURCES	280
MOUNTING TYPE	VARIES
PRODUCT DIMENSIONS	L 2/3/4/6/8 ft
MATERIAL	ALUMINUM
COLOR	WHITE/BLACK/GREY
SURFACE PROCESSES	N/A
NET WEIGHT (PIECE)	N/A
IP RATING	IP27

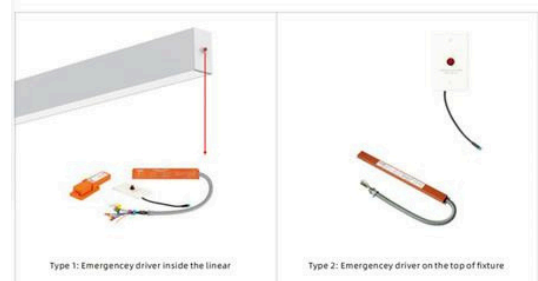
### DESCRIPTION

Energy conservation and environmental protection, with no ultraviolet, infrared, or mercury pollution. Non-isolated constant current drive, ensuring safety, stability, and reliability. It utilizes imported light sources and advanced heat dissipation technology, achieving a mean time between failures of two years. Additionally, it boasts no flicker or glare, exhibiting strong seismic performance. Supports suspension mount, ceiling mount, wall mount, and recessed mount.

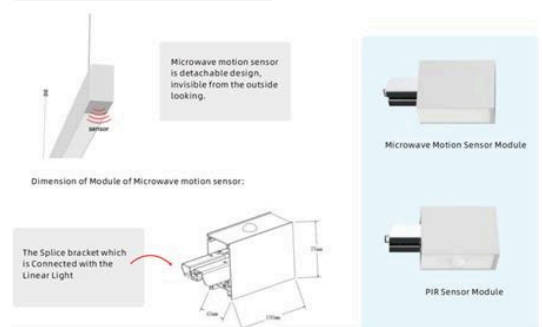
### ACCESSORIES



#### EMERGENCY BATTERY



#### MICROWAVE MOTION SENSOR & PIR SENSOR



#### MOUNTING ACCESSORIES SURFACE MOUNT



#### MOUNTING ACCESSORIES T-BAR MOUNT



#### MOUNTING ACCESSORIES RECESSED



#### MOUNTING ACCESSORIES PENDANT MOUNT



#### MOUNTING ACCESSORIES WALL MOUNT

